



## **75 Castle Road, Weddington, Nuneaton, CV10 0EW**

**\*\*\*AVAILABLE JULY\*\*\*** This delightful end terrace home comes to the market to rent and is offered unfurnished and is presented in good order throughout. Located in the most popular location of Weddington, this home provides two bedrooms and bathroom to the first floor, lounge and dining room plus modern kitchen to the ground floor. With uPVC double glazing throughout and gas central heating, sizable garden plus off road parking. With fantastic local school and amenities as well as access to the A5 and wider road network we expect a huge demand for this property so call now on 02476 374949 to secure your viewing.

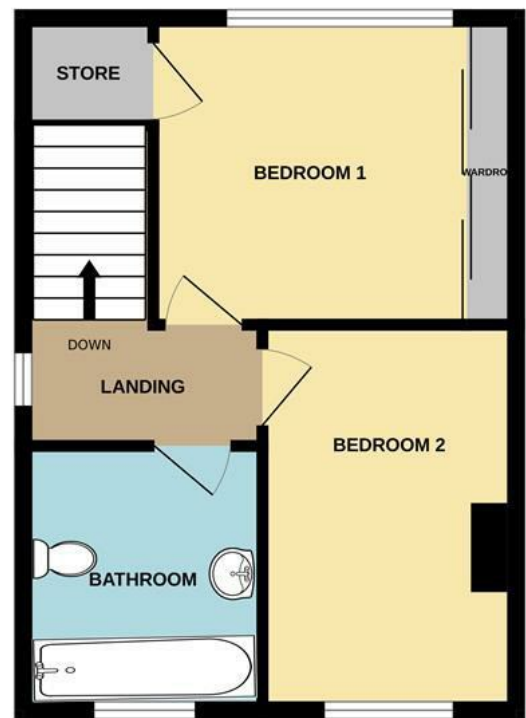
- Sought after location
- End terrace family home
- Fantastic local amenities
- Spacious living accommodation
- Two double bedrooms
- Family bathroom
- Enclosed garden and off road parking
- EPC E & Council tax band A

**£875 PCM**

GROUND FLOOR



1ST FLOOR



This floor plan is not to scale and is for guidance purposes only  
Made with Metropix ©2023

Energy Efficiency Rating		
	Current	Potential
Very energy efficient - lower running costs		
(92 plus) <b>A</b>		
(81-91) <b>B</b>		
(69-80) <b>C</b>		
(55-68) <b>D</b>		
(39-54) <b>E</b>		
(21-38) <b>F</b>		
(1-20) <b>G</b>		
Not energy efficient - higher running costs		
England & Wales	EU Directive 2002/91/EC	

Environmental Impact (CO <sub>2</sub> ) Rating		
	Current	Potential
Very environmentally friendly - lower CO <sub>2</sub> emissions		
(92 plus) <b>A</b>		
(81-91) <b>B</b>		
(69-80) <b>C</b>		
(55-68) <b>D</b>		
(39-54) <b>E</b>		
(21-38) <b>F</b>		
(1-20) <b>G</b>		
Not environmentally friendly - higher CO <sub>2</sub> emissions		
England & Wales	EU Directive 2002/91/EC	



39 Newdegate Street, Nuneaton, Warwickshire, CV11 4ER  
Tel: 02476 374949 Email: nuneatonlettings@sheldonbosleyknight.co.uk



RURAL

SALES

LETTINGS

PLANNING &  
ARCHITECTURAL

COMMERCIAL

SURVEYS &  
VALUATIONSNEW  
HOMESBLOCK  
MANAGEMENT